

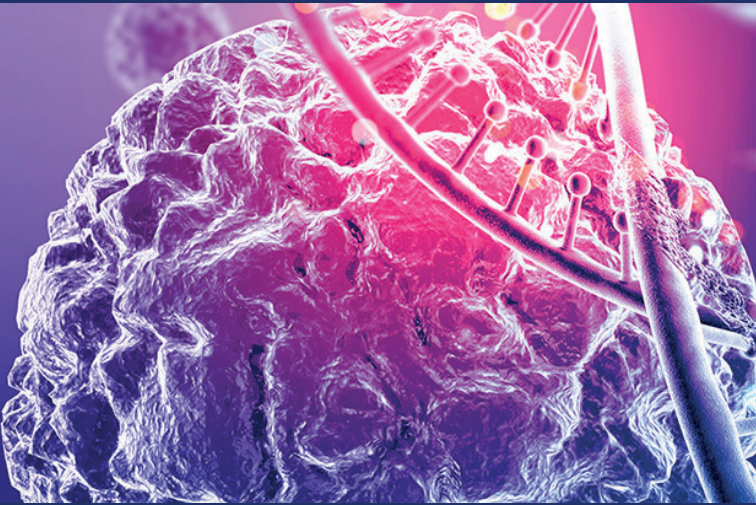
WITH THE SUPPORT OF



FONDAZIONE  
FRIULI



THE UNIVERSITY OF TEXAS  
~~MD Anderson~~  
Cancer Center  
Making Cancer History®



1<sup>ST</sup>

CRO-AVIANO  
MD ANDERSON  
SYMPOSIUM  
ON PRECISION  
ONCOLOGY

## SCIENTIFIC COORDINATORS

**Gustavo Baldassarre**

Centro di Riferimento Oncologico, CRO Aviano, IRCCS, Italy

**Silvia Franceschi**

Centro di Riferimento Oncologico, CRO Aviano, IRCCS, Italy

## FACULTY

**UNIVERSITY OF TEXAS**

**MD ANDERSON CANCER CENTER, HOUSTON, TX**

**Giulio Draetta**

Senior Vice President and Chief Scientific Officer,  
Sewell Family Chair of Department of Genomic Medicine

**Raghu Kalluri**

Director of The Office for Training and Mentoring of Scientists,  
Chair of the Department of Cancer Biology

**CENTRO DI RIFERIMENTO ONCOLOGICO**

**CRO AVIANO, IRCCS, IT**

**Gustavo Baldassarre**

**Vincenzo Canzonieri**

**Silvia Franceschi**

**Valter Gattei**

**Lorenzo Gerratana**

**Roberta Maestro**

**Maurizio Mascarin**

**Samuele Massarut**

**Maurizio Polano**

**Diego Serraino**

**Agostino Steffan**

**Giuseppe Toffoli**



A V I A N O  
NOVEMBER 29TH  
2 0 2 2

# AULA M. TROVÒ

Centro di Riferimento Oncologico, Cro Aviano, IRCCS, Italy

- 09.00 - 09.30** Registration
- 09.30 - 11.00** Openings
- Benvenuto\_Welcome  
FRANCESCA TOSOLINI
- Scopo dell'iniziativa\_Aims of the Initiative  
BRUNO MALATTIA
- La ricerca al MD Anderson  
MD Anderson research portfolio  
GIULIO DRAETTA
- La ricerca al CRO-Aviano  
CRO-Aviano research portfolio  
SILVIA FRANCESCHI
- The MDA-CRO  
RAGHU KALLURI
- Programma di collaborazione  
Collaboration program  
AUTORITÀ\_AUTHORITIES
- 11.00 - 11.30** Coffee Break

## Ongoing Research at MD Anderson

CHAIRS: ROBERTA MAESTRO, VALTER GATTEI

- 11.30 - 12.15** Targeting Medium Chain Acyl-CoA Dehydrogenase in Glioblastoma  
GIULIO DRAETTA
- 12.15 - 13.00** Tissue Damage Response/Regeneration and Tumor Ecosystem Determines Malignant Progression of Cancer  
RAGHU KALLURI
- 13.00 - 13.20** Epigenomic regulation of ovarian cancer resistance to therapies  
GUSTAVO BALDASSARRE
- 13.20 - 14.30** Lunch

## Ongoing Research at CRO-Aviano

CHAIRS: AGOSTINO STEFFAN, GUSTAVO BALDASSARRE

- 14.30 - 14.50** The epidemiology of cancer in Italy  
DIEGO SERRAINO
- 14.50 - 15.10** The Breast Unit translational research program  
SAMUELE MASSARUT
- 15.10 - 15.30** Innovation in Radiotherapy
- 15.50 - 16.20** Coffee Break
- 16.20 - 16.50** CLL @ CRO:  
a clinical & experimental approach  
VALTER GATTEI
- 16.50 - 17.10** Molecular characterization of glioblastomas for personalized therapy: the experience of a multidisciplinary approach in the Friuli Venezia Giulia region  
GIUSEPPE TOFFOLII, MAURIZIO POLANO
- 17.10 - 17.30** The CRO-Biobank, opportunity for translational research  
VINCENZO CANZONIERI
- 17.30** Discussion and concluding remarks  
GIULIO DRAETTA, RAGHU KALLURI,  
SILVIA FRANCESCHI, GUSTAVO BALDASSARRE

